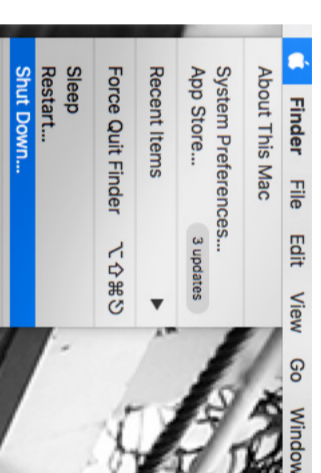


Mac Basics

Switching on:

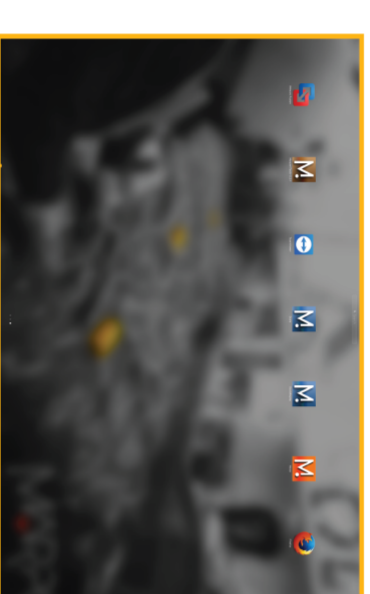


Switching off:

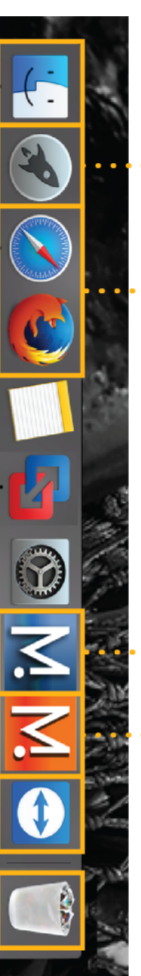


Opening applications and files via the Dock:

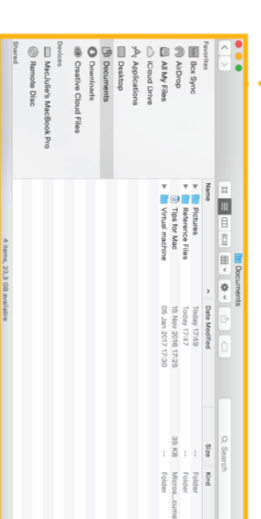
Launchpad: access all your applications



Web Scala Mosa TeamViewer



Trash: to delete item, drag it to the trash

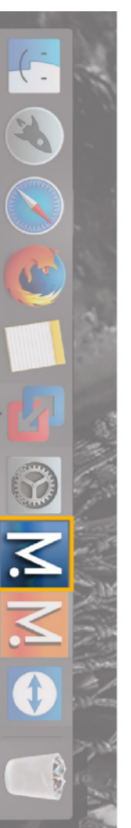


Finder: access your files

Opening Scalaz2


A license file must be stored on the computer to be able to open Scalaz2.

From the Dock at the bottom of the screen, click Scalaz2 icon.



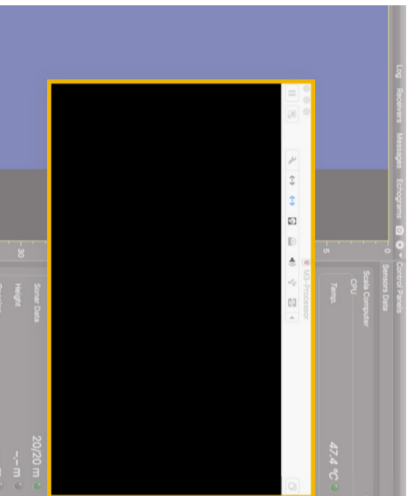
▲ The following window is a software that analyzes sensors data. This program is necessary for the functioning of the receiver.

DO NOT CLOSE this window.

If it appears, click minimize  to hide it. This icon should always appear at the bottom of your desktop screen:



If you close the window, restart the system.

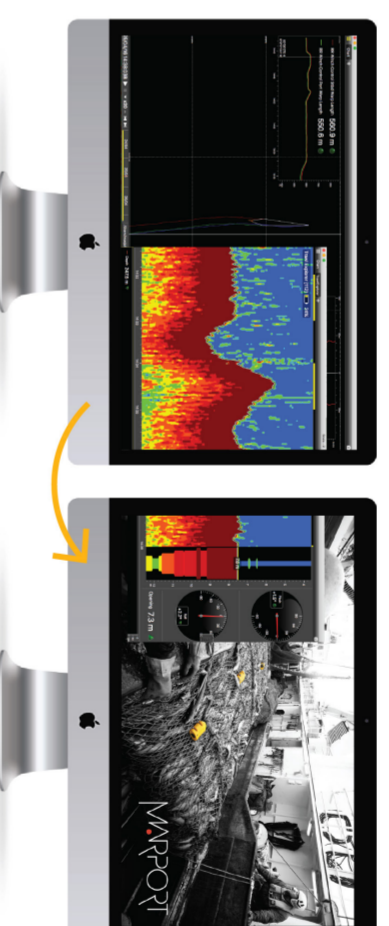
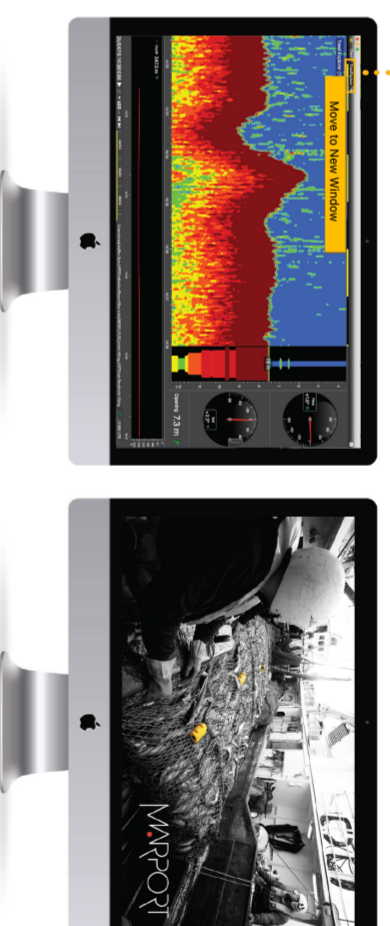


Windows

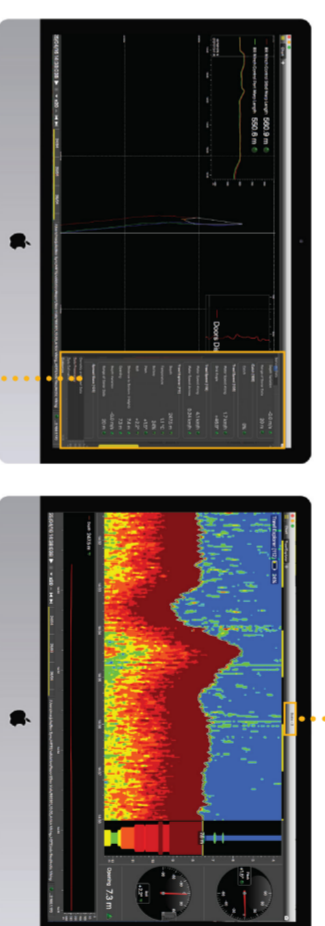
Opening a page in a new window

Click **Menu ≡** > **Customize** and enter the password eureka.

Right - click the page name, click **Move to New Window** and drag the new window to another screen.



Scala - 2

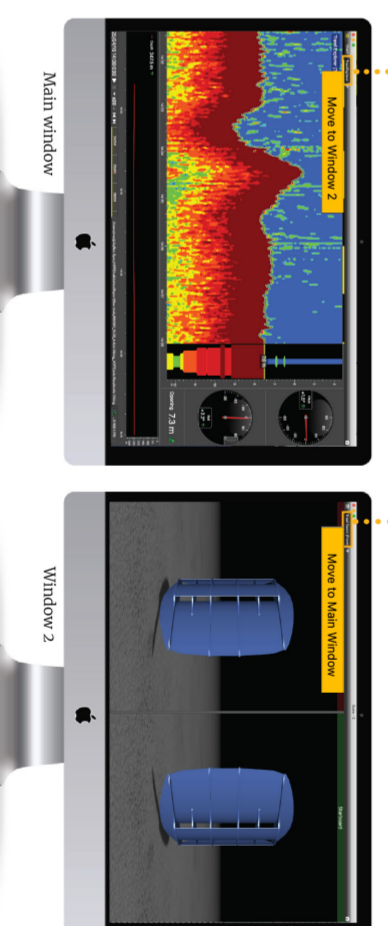


Main window = Control panels

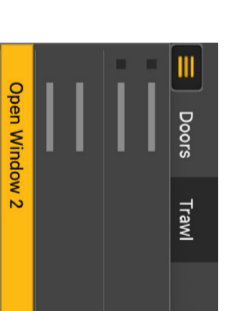
Moving pages between windows

From the main window, right-click a page name and click **Move to Window 2** (or 3, 4...).






Or from window 2, right-click a page name and click **Move to Main Window**.



If you closed a secondary window, you can find it back from the menu:



Troubleshooting

Problem	Possible causes	Solution
Sensor data are not displayed, LEDs are red or orange.	You may have closed the virtual machine that analyzes receiver data when you started Scalaz2 or when you plugged in a device.	1. Check if this icon  is in the Dock. If not, restart the system. ▲ A virtual machine starts automatically when starting the computer and is necessary for Scalaz2 functioning. The virtual machine window can appear when starting Scalaz2. Do not close it.
I cannot find a window.	You may have closed the window.	Click Menu ≡ > Open Window X 
I cannot see pages that used to be displayed on the top toolbar.	You may have moved these pages to a new window.	1. Check the other windows to see if the page appears in it. If you created a window and cannot find it, see the previous troubleshooting case. 2. If the page is in another window, right-click the page name and select Move to Main Window to move it to the window with the control panels, or Move to Window X to move it to another window.
A VMware Fusion message appears when adding a new USB key.	This message is due to the virtual machine. It appears when adding external an USB device.	If the page was hidden, click the + icon on the toolbar to find it. 
I cannot connect to the internet.	Internet network might be too far in the network list.	1. Select Remember my choice and do not ask again. 2. Click Connect to Mac. 
I cannot connect to the internet.	Internet network might be too far in the network list.	1. From the top left corner of the screen click Apple Menu > System Preferences > Network . 2. From the bottom of the network list, click the wheel icon and select Set Service Order .  3. Drag the network you use to have internet on top of the list. It can be for example your phone WiFi, your router WiFi, a USB to Ethernet adapter...

Spain
Marport Spain SRL
Camino Chouzo 1
69208 Vigo (Pontevedra), Spain
+34 986 29 69 69
supportspain@marport.com

United Kingdom
Marport UK Ltd
32 Wilson Street
Peterhead, AB37 1UD, United Kingdom
gyoungson@marport.com

USA

Marport Americas Inc. USA
12123 Harbour Reach Drive
Mukilteo, WA 98275 USA
supportusa@marport.com

South Africa
Marport South Africa
Cape Town, Western Cape,
11 Paarden Eiland Road,
Paarden Eiland, 7405
csanter@marport.com

Norway
Marport Norge A/S
Brevika Industrivei 69,
6018 Ålesund, Norway
supportnor@marport.com

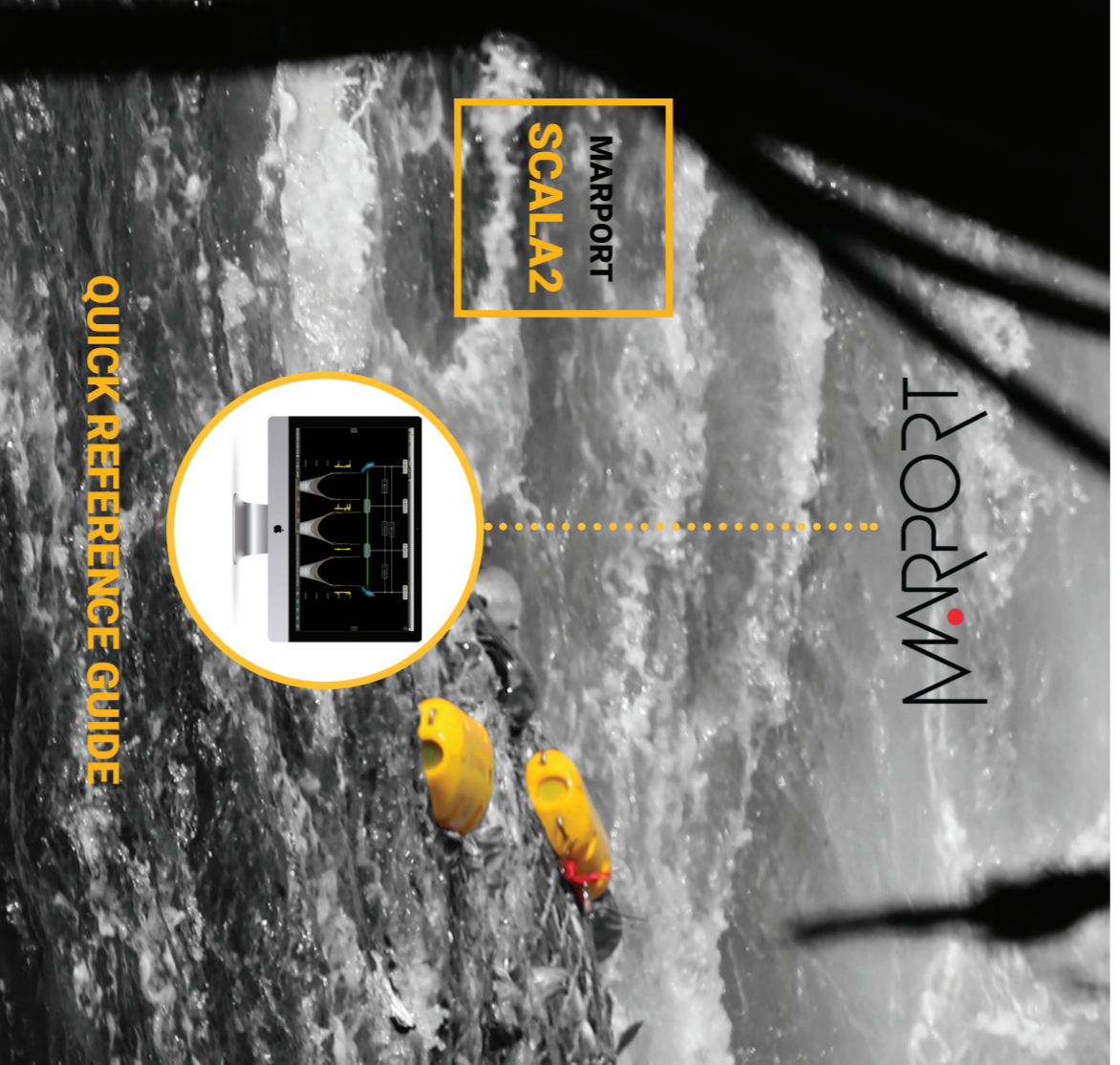
France

Marport France SAS
8, rue Maurice Le Léon
56100 Lorient, France
supportfrance@marport.com

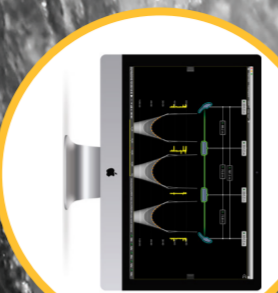
Iceland

Marport EHF
Fossaleyni 16
112 Reykjavik, Iceland
supporticeland@marport.com

Offices



MARPORT
SCALAZ2



QUICK REFERENCE GUIDE

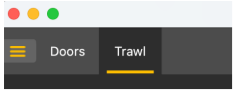
Scalaz2 collects, processes, stores and displays data sent from multiple sensors, sounders and other connected devices.

Scalaz2 is the evolution of Scala. It supports Marport's new Pro range of sensors, as well as Dock charger. You can benefit from several enhancements:

- Display a multitrawl view of single, twin, triple, quad and penta trawls with doors and clump alignment, warp length and echogram display.
- Add event markers in live time, then find them back when replaying data on ScalaReplay2.
- Use drag and drop possibilities to customize your page layout.
- Choose from existing gauges, history plots or 3D views or create your own layout with any number of sensors displayable on screen.
- Compare data from equivalent sensors using multiple history plots.

! This guide is an introduction to Scalaz2. If you want to learn more about configuration and advanced customization of display, see Scalaz2 User Guide.

Data received from sensors are displayed on pages. Pages are organized in tabs in the top toolbar.



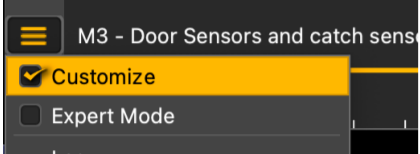
Click one tab to display the corresponding page.

On the top of the echogram, you can see:

- Name of the sensor, followed by a number corresponding to its location on the trawl (see Scala2 user guide for more details),
- Battery level of the sensor,
- Target Strength if using V3 Explorer sensors (helps you differentiate species and sizes of fish).

HDTE [9] 60% -36.0 dB

To edit pages, first click the menu, then **Customize**. Enter the password **eureka**.

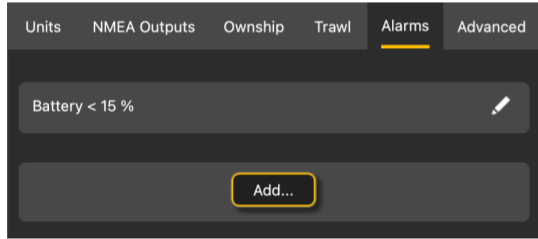


When you have finished customizing pages, you need to deactivate the Customize mode: click **Menu** => **Customize** again.

Setting an Alarm

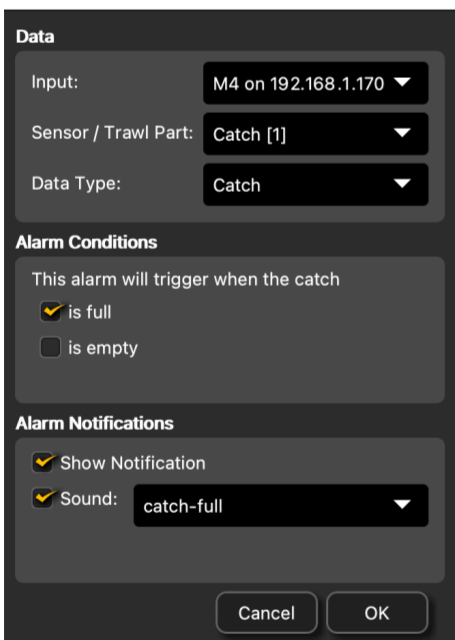
You can be alerted by an alarm when data received have a given value.

- Click **Menu** => **Settings**.
- Select the tab **Alarms**.
- Click **Add**.



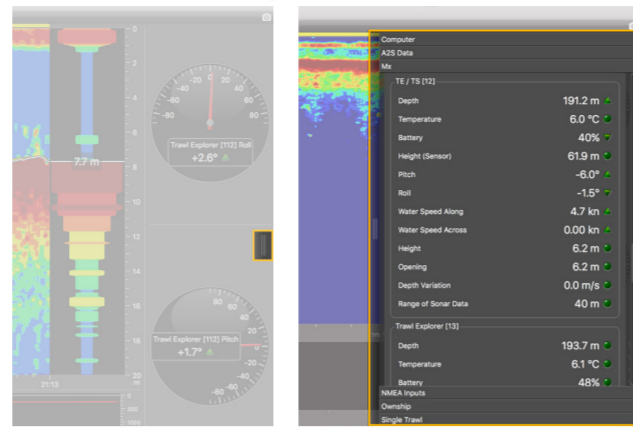
- Data:** choose on which equipment and type of data the alarm is set.
- Alarm Conditions:** choose the conditions on which the alarm is triggered.
- Alarm Notifications:** choose if you want to display a pop-up notification and/or a sound.

For example, with these parameters you are alerted when the catch is full:

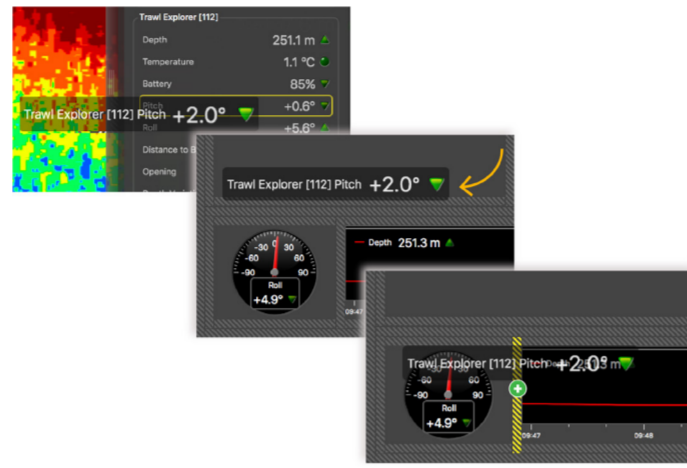


Adding data to a page

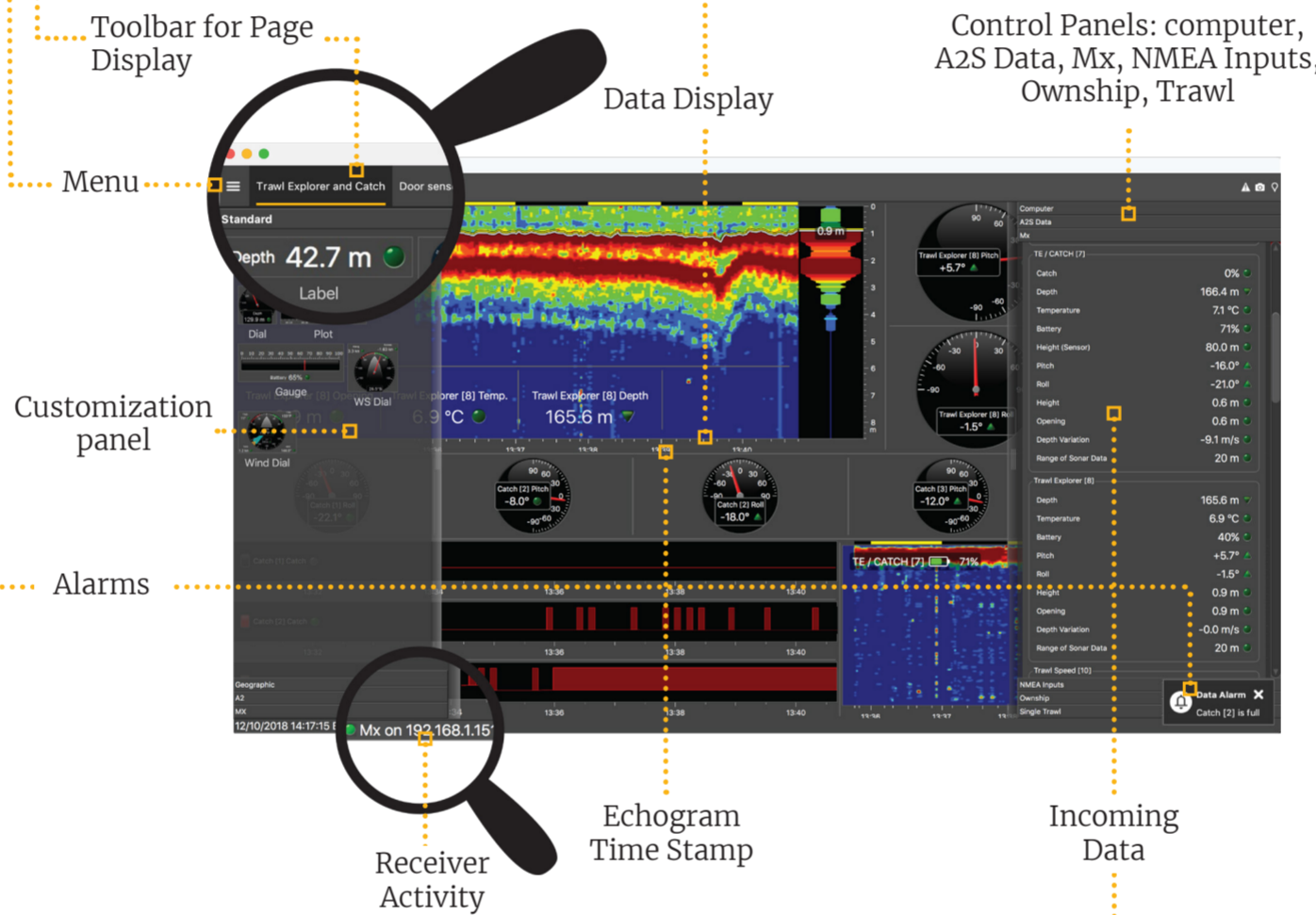
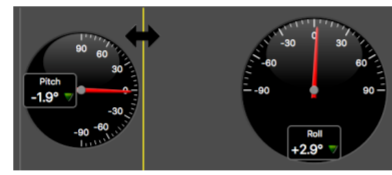
- Open the drawer on the right side of the screen to display the control panels.
- In the **Mx** control panel, you can see the IP address of the receiver(s), the name of the sensors (e.g. Catch, Trawl Explorer, Spread Master...) and data they receive (e.g. pitch, roll, depth...).



- Click data, for example Pitch, and hold your click. After 3 sec. a rectangle with data appears. Drag it to the middle of the screen, above grey striped areas. The area becomes yellow when you can place data.
- Stop clicking to drop data in this area.



- From the window that appears, choose how you want to display data: dial, history plot, text...
- Drag the lines around data to resize them.



Mx on 192.168.10.177 Receiver is active.

Mx on 192.168.10.177 The communication with the receiver has just been lost. There is a connection problem.

Mx on 192.168.10.177 The communication with the receiver has been lost for at least 20 seconds.

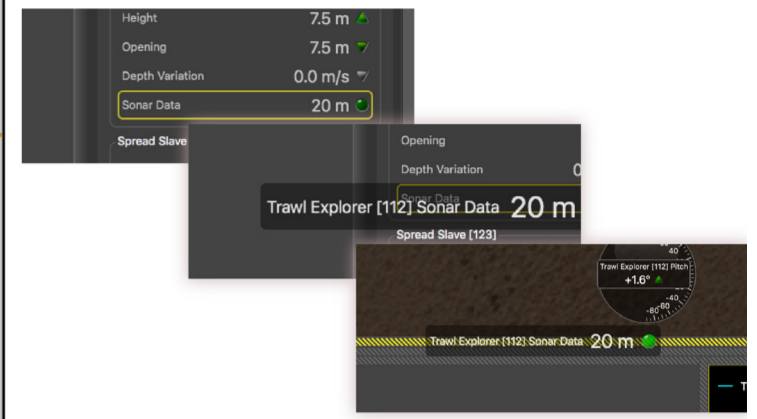
- (blinking) Data is received
- Communication with the receiver has been lost for a few sec. There is a connection problem.
- There is no communication with the receiver.

Examples of data you can display

Echogram

In the **Mx** control panel, **Sonar Data** corresponds to echograms. Echograms are a representation of what is detected by the sensors with the acoustic signals. The strength of a detected target is expressed in Decibels (dB), that correspond to specific colors on the echogram. Blue usually represents the lowest target strengths and red the highest target strengths.

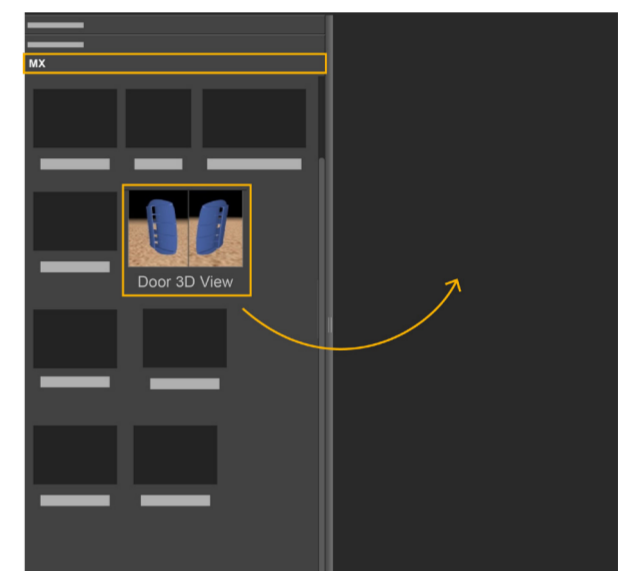
To add an echogram, click + drag Range of Sonar Data to a page.



Scroll to zoom in and out of the echogram. To change colors, right-click the echogram and select **Show Palettes**.

3D view of trawl doors

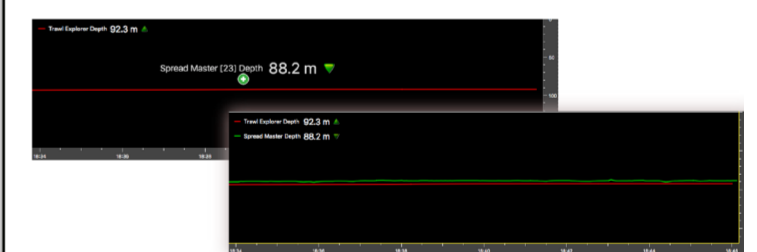
Open the customization panel and go to the **Mx** tab. Click + drag the **Door 3D View** to the page.



Multiple history plots

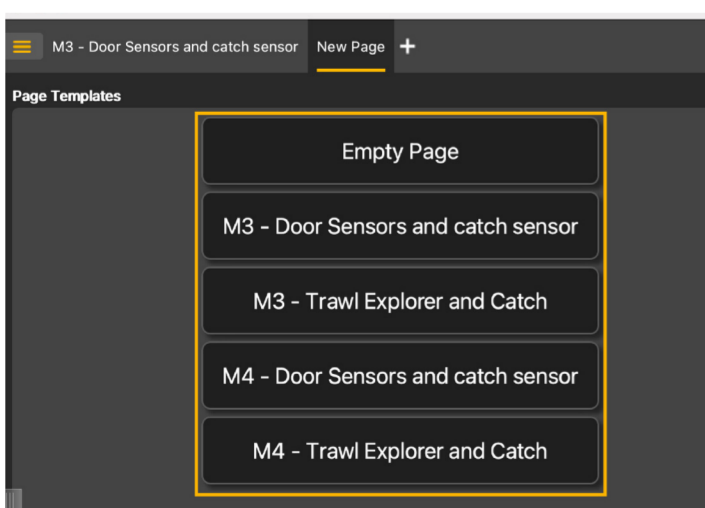
You can add multiple data in one history plot in order to easily compare different data at the same time.

- In the **Mx** control panel, click + drag data, for example Depth from a Trawl Explorer, to a page.
- From the window that appears, select History Plot.
- Drag other similar data, for example Depth from a Spread Master, to the first Depth history plot.
- The second data appear in the history plot in another color.

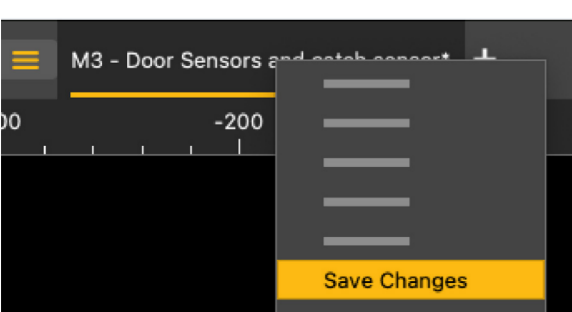


Creating and saving a page

- To create a new page, click + in the top toolbar.
- Choose among templates or start from scratch with an empty page.

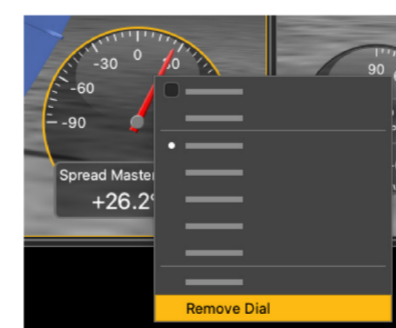


- To save the page, right-click the page tab and click **Save Changes**.



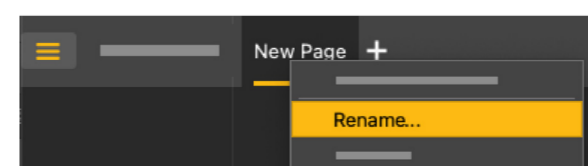
Removing data from a page

Right-click data element and select **Remove**.



Renaming a page

- Right-click the page tab and select **Rename**.
- Write a name.
- Press **Enter**.

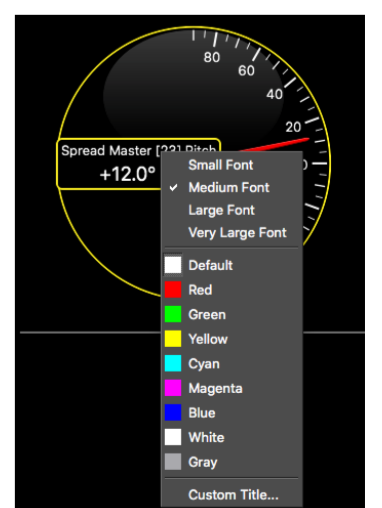


Changing the display of page elements

You can change the title of the elements or the element itself (dial, gauge or history plot).

- To change the title, right-click the title and choose:

- Font size
- Font color: it changes only the color of numerical data, except for history plots where it changes the line color.
- Custom title to change the default title.



- To change the display of a dial, gauge or plot, right-click the element and choose among the different options.